



UTILITY VESSEL

DTA-5



Classification:

ABS + A1(E). + AMS

Flag: U.A.E

Official Number: 5200

Call Sign: A6E3045

IMO Number: 8964226

Built: 1984

Builders: YAMAKAWA SHIP BUILDING CO. LTD. JAPAN.

Principle Dimensions

LOA:	43m
Breadth:	10m
Depth:	4.50m
Draft	2.45 / 3.76m
GRT / NRT	488 Tons / 146 Tons
Deadweight	407 Tons
Clear Deck Space	18.0m
Deck Cargo Capacity	150 Tons

Cargo Capacities

Feul	150 MT
Portable Water	300 MT

Machinery and Propulsion

Main Engine	2 x WEICHAI Main Engines Each
Propeellers	1050BHP 2X Fixed Pitch Propellers
Bow Thruster	1X Kamone CCP, 2.5T Thrust
Generators	2X WEICHAI 180 kW Each

Navigation and Communication Equipt.

ECHO Sounder	1
Autopilot	1
GMDSS	A3 Installed
VHF	4
GPS	1
GYRO	1
Radar(s)	2
Portable VHF	3
Magnetic Compass	1
NAVTEX Reciever	1
SSB	1

Fire Fighting Safety, Rescue & Pollution.

Pump
Monitor
Eductor
Foam Tank
Oil Dispersant 10 MT

Accommodations

Crew Max.:	8
Passenger Berth	12
Passengers	30 First Class Seats

Performance

Maximum Speed:	13 Knots
Service Speed:	11 Knots
Fuel Consumption at Max Speed	4 Tons @ 24hrs
Fuel Consumption at Economical	3 Tons @ 24hrs
Speed	

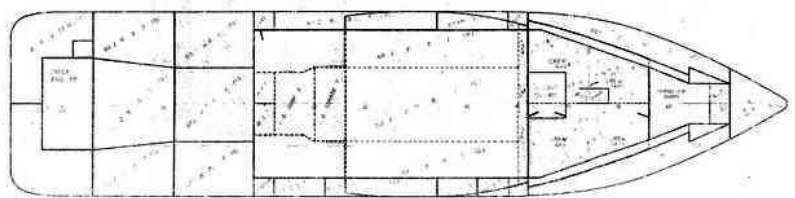
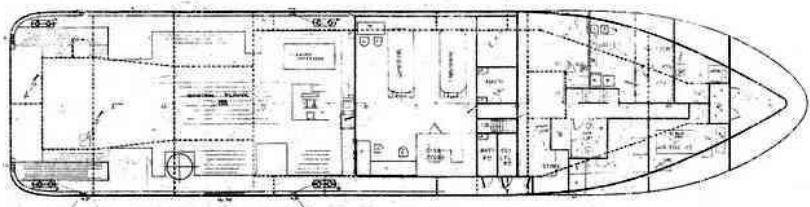
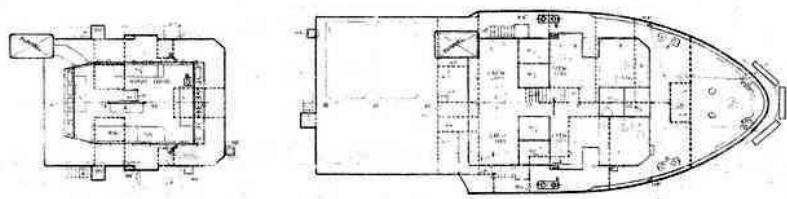
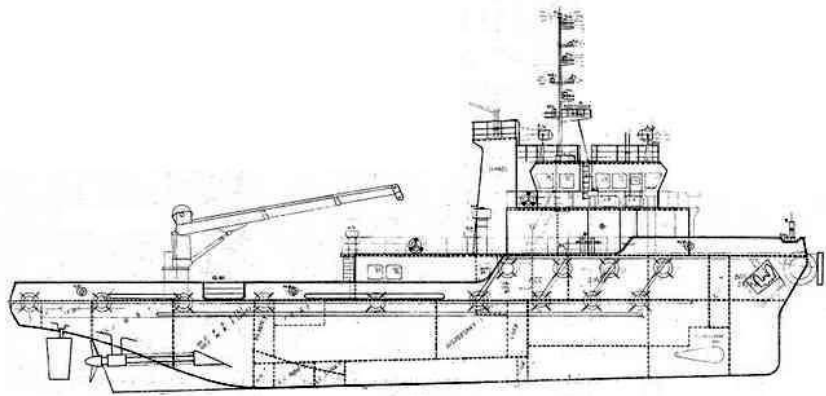
Discharge Rate

Portable Water	70 MT Per HR
Fuel Oil	35 MT Per HR

Special Equipment

Life Raft	4
Bunkers for Pax	12
Galley / Laundry / Crew Mess / Pantry	Present

This specification is preliminary and subject to change without notice. Exact tank capacities, deadweight, deck cargo capacity and other figures that have been calculated and may change when the actual vessel is delivered.



DTA SHIP AGENCY LLC

Vessel Name: DTA 3

LOA: 43m

Breadth: 10m

Depth: 4.50m

GRT/ NRT: 488 MT/ 146 MT