



UTILITY VESSEL

DTA-13



General Information

Owners	DTA Ship Agency L.L.C.
Designer	Strategic Marine (Singapore) Pte Ltd
GRT / NRT	238 / 71
Year Built	2008
Builder	Strategic Marine (Singapore) Pte Ltd
Official Number	332914
Call Sign	9 WHQ 3

Performance

Max Cruising Speed	25 Knots
Cruising speed	23 Knots
Fuel Consumption	688 litres/hr
Cruising Gen-Set	20 litres/hr

Main Characteristics

L.O.A	40.37 M
Beam Molded	7.70 M
Draft Design	2.30 M
Loaded Displacement	220 Tons
Lightship	95 Tons

Capacity

Fuel Oil	60000 litres
Fresh Water	25000 litres
Clear Deck Space	110 sq.m
Deck Cargo	50 Tons

Classification

Plying Limit	Near Coastal
Class	DNV.GL
Notation	DNV+A1 HSC AMS
Port Of Registry	Majuro
Flag	Republic of the Marshall Islands
Horse Power	4500 BHP

Navigation & Communication Equipment

Gyro Compass	Fitted
GPS	Furuno GP 32
Radar	Furuno FR1510 MK3
Echo sounder	Fuso Fec 609A
Marine VHF	Fitted
Marine SSB	Fitted
Auto pilot	Furuno SC 60
Directional Finder	Fitted
Chart Plotter	Fitted
GMDSS	A1 & A2
LEL + H2S Sensor	4 nos. each

Accommodation

Fully air conditioned reclining ferry seats for 51 crew with individual hand rest and 10 crew complement

Fire Fighting Equipment

Fire Hydrant Station	As per Classification's requirement
Fire Extinguisher	Portable type at appropriate locations
Fixed system	CO2 smothering system for engine room protection



UTILITY VESSEL

DTA-13



Auxiliaries

2 x Cummins 80 Kwe, 50 Hz

Pumps

Main Bilge & Fire Pump	Desmi S70-50-220/A09, 30 c.u.m/hr at 54 m head
Back Up Bilge & Fire Pump	Johnson F9B-5600, 17 c.u.m/hr at 30 m head
Emergency Fire Pump	Yanmar BX20CR, 600 ltrs/hr at 32 m head

Propulsion & Machinery

Main Engines	2x KTA 38M2
	1x KTA 50M2
Propulsion	3x Fixed Pitch Propellers
Bow Thruster	1 MT Thrust

Life Saving Appliances

As per SOLAS 74/78, Port of Registry and Classification's requirement

Other Equipment

Life Raft	4 x CMS 50 men inflatable life raft c/w automatic hydrostatic release
Rescue Boat	1 x 6 men semi-rigid rescue boat c/w 25 hp outboard engine

Design Characteristics

Designed and built for the purpose of standby and transportation of personnel / materials

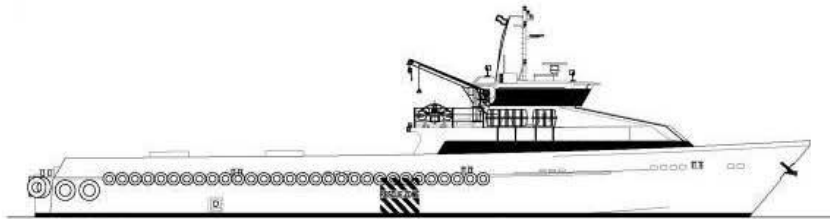


UTILITY VESSEL

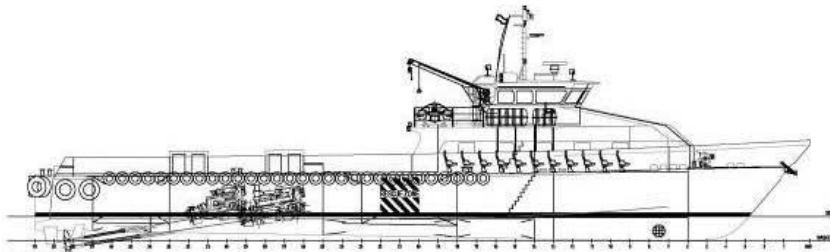
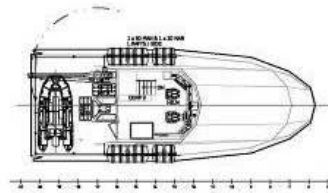
DTA-13



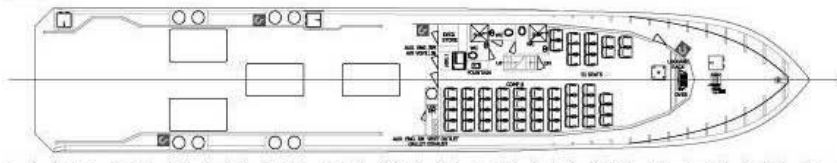
GA PLAN



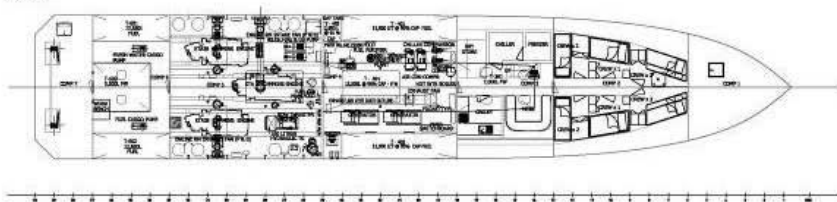
STBD PROFILE
SCALE 1:100
DATE: 09/16



STBD PROFILE
SCALE 1:200



MAIN DECK
SCALE 1:200



LOWER DECK
SCALE 1:200

Strategic Marine
 Let 3, Cleopatra Beach Road
 Sandton, N.A. 2014
 Telephone: (011) 9477 4846
 Facsimile: (011) 9477 4838

40-37m RIG-PERSONEL / UTILITY VESSEL
 GENERAL ARRANGEMENT

NO.	REV.	DATE	BY	CHKD.	APP'D.
1	1	15/09/16	MM	MM	MM
2	1	15/09/16	MM	MM	MM
3	1	15/09/16	MM	MM	MM
4	1	15/09/16	MM	MM	MM
5	1	15/09/16	MM	MM	MM
6	1	15/09/16	MM	MM	MM
7	1	15/09/16	MM	MM	MM
8	1	15/09/16	MM	MM	MM
9	1	15/09/16	MM	MM	MM
10	1	15/09/16	MM	MM	MM

DATE: 15/09/16
 DRAWING NO.: SA70-110_00
 SHEET NO.: 1/1