



# SUPPLY VESSEL

## DTA 1



### Classification:

AMERICAN BUREAU OF SHIPPING

Flag:	U.A.E
Official Number:	6012
Call Sign:	A6E2616
IMO Number:	8848329
Built:	1990
Builders:	Green Bay Marine

### Principle Dimensions

LOA:	32.00m
Breadth:	6.69m
Depth:	3.3m
Summer Load Draft	2.006m
Max Displacement	209 Tons
Light Displacement	106.84 Tons
GRT / NRT <b>Cargo</b>	298mt / 89mt

### Capacities

Deadweight	101.36 Tons
Deck Cargo	55 MT
Clear Deck Space	10 M X 5.5 M
Deck Strength	3 Tons Per Sq Meter
Fuel Oil	33 Tons

### Machinery and Propulsion

Main Engine	2 nos
Propeellers	Fixed Pitch x 2nos
Bow Thruster	Engine Driven
Generators/ Diesel Engines	2x 30 KW Alternators driven by Perkins x 2 nos

### Navigation and Communication Equipment.

Echo Sounder	Furuno FCV 667
GPS	Furuno GP-31
Radar(s)	JRC JMA - 2043
SSB Radio	Icom IC - M710
Marine VHF x 3	1x Icom RT2048, 1x Standard
Compass	Gemini
Public Address	Ray-marine 420

### Accommodations

Crew Max.:	8
Passenger Berth	02
Passengers	30

### Deck Equipment

Anchor	1 x 135 KG Danford Windlass
Windlass	16mm dia U2 short link - 365 M

### Performance

Maximum Speed	11 knots
Service Speed:	10 knots
Economical Speed Fuel	9 knots
Consumption at Max Speed	3 Ton per day
Fuel Consumption at Economical Speed	2.5 Ton Per Day

### Life Saving Equipment

As Per Solas 74/78 and part of registry requirements

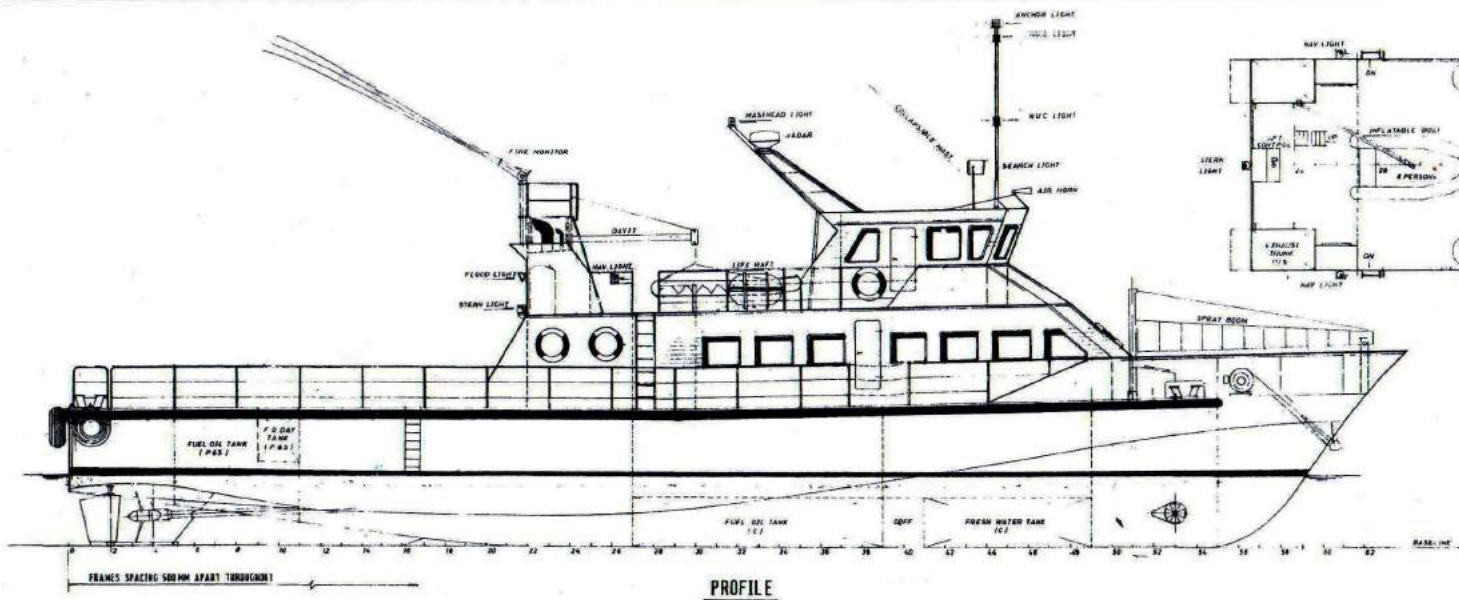
### Fire Fighting Equipment

Portable Fire Extinguisher	11 Pcs x Approved Portable Fire Extinguisher
fire Extinguisher	Halon Engine Room Flooding System
Fire Monitor	1 Monitor - 40 m3 / hr x 80 m Head

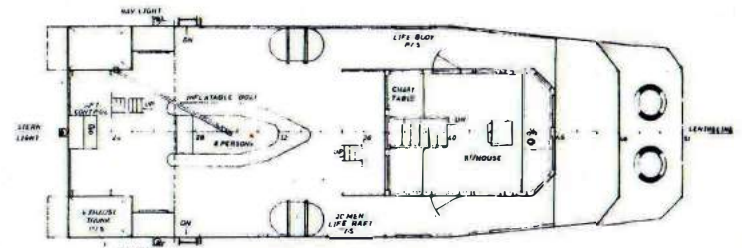
### Special Equipment

Life Raft	4 x 20
Manoverboard	2 x Comet
OWS	Fitted
Forward Deck Flood Light	1 x 1000W deck flood light 2
Aft Deck flood Light	x 1000W deck flood light

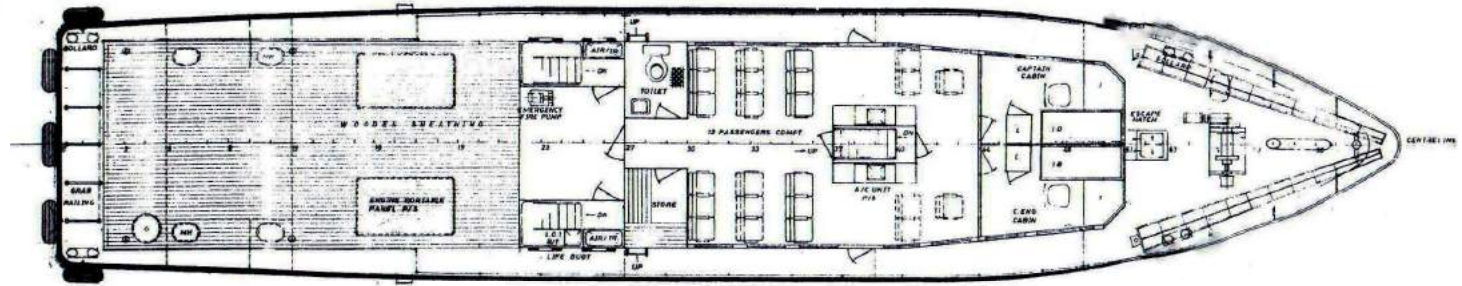
This specification is preliminary and subject to change without notice. Exact tank capacities, dead-weight, deck cargo capacity and other figures that have been calculated and may change when the actual vessel is delivered.



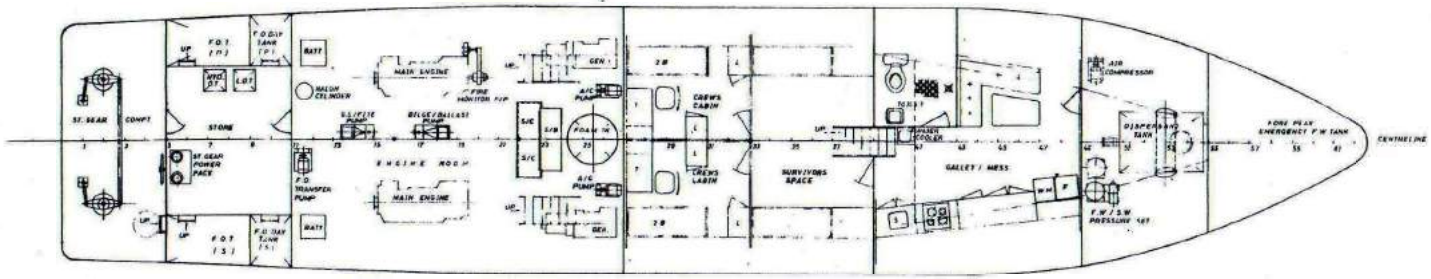
PROFILE




BRIDGE DECK PLAN



MAIN DECK PLAN



UNDER DECK PLAN

 <b>DTA SHIP AGENCY LLC</b>	
PO BOX: 12924 Dubai UAE TEL: 045596400 FAX: 045506210	
Vessel Name:	DTA-1
Principal Dimentions	
LOA:	32m
Breadth	6.69m
Depth	3.3m
GRT	298 MT / 89 MT